

Maine Health Management Coalition / Aligning Forces for Quality

Opportunities and Challenges in Employer, Consumer, Health System, Public Health Collaboration

Ted Rooney RN, MPH

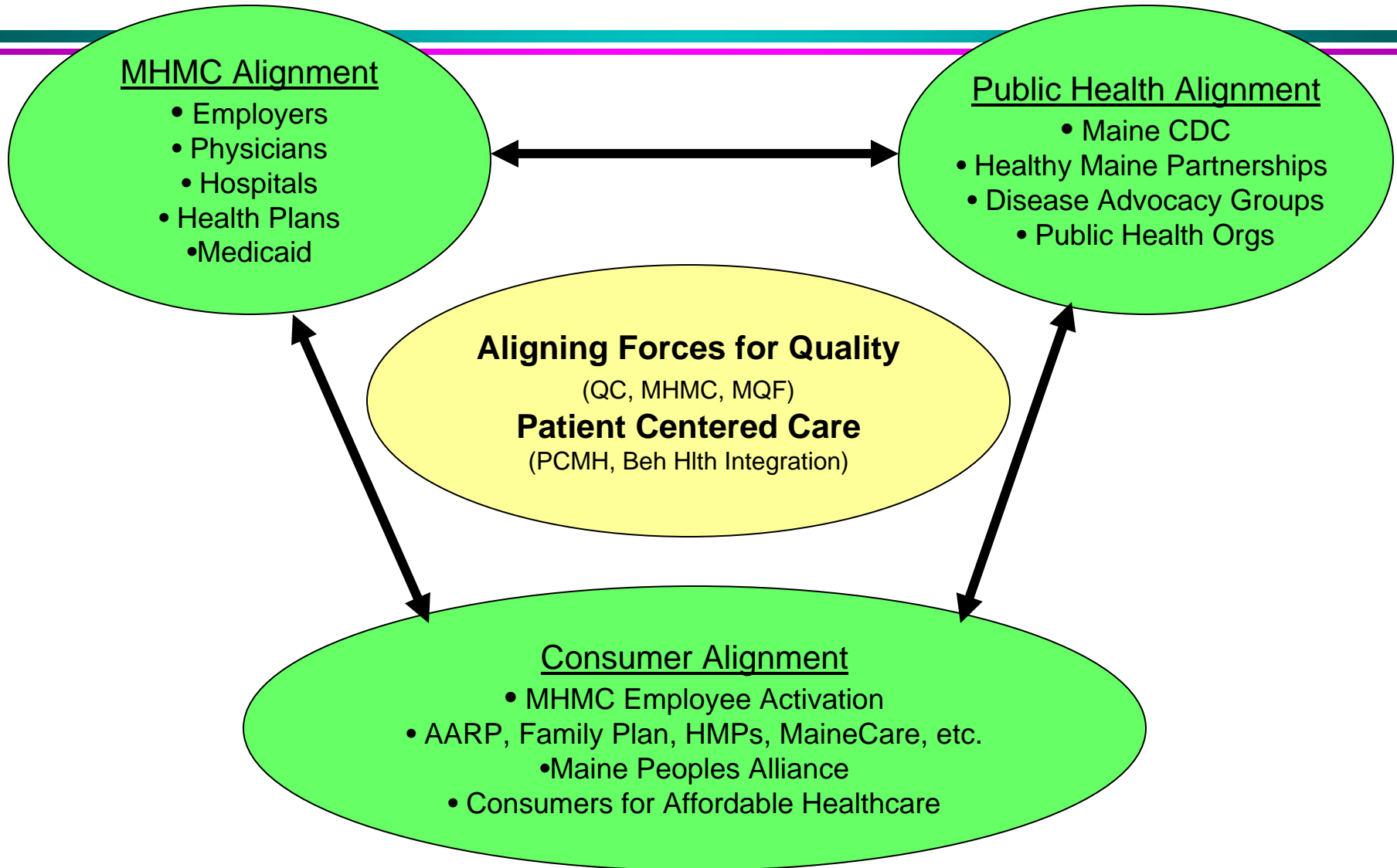
- MHMC Project Leader
- AF4Q Project Director

Aligning Forces for Quality

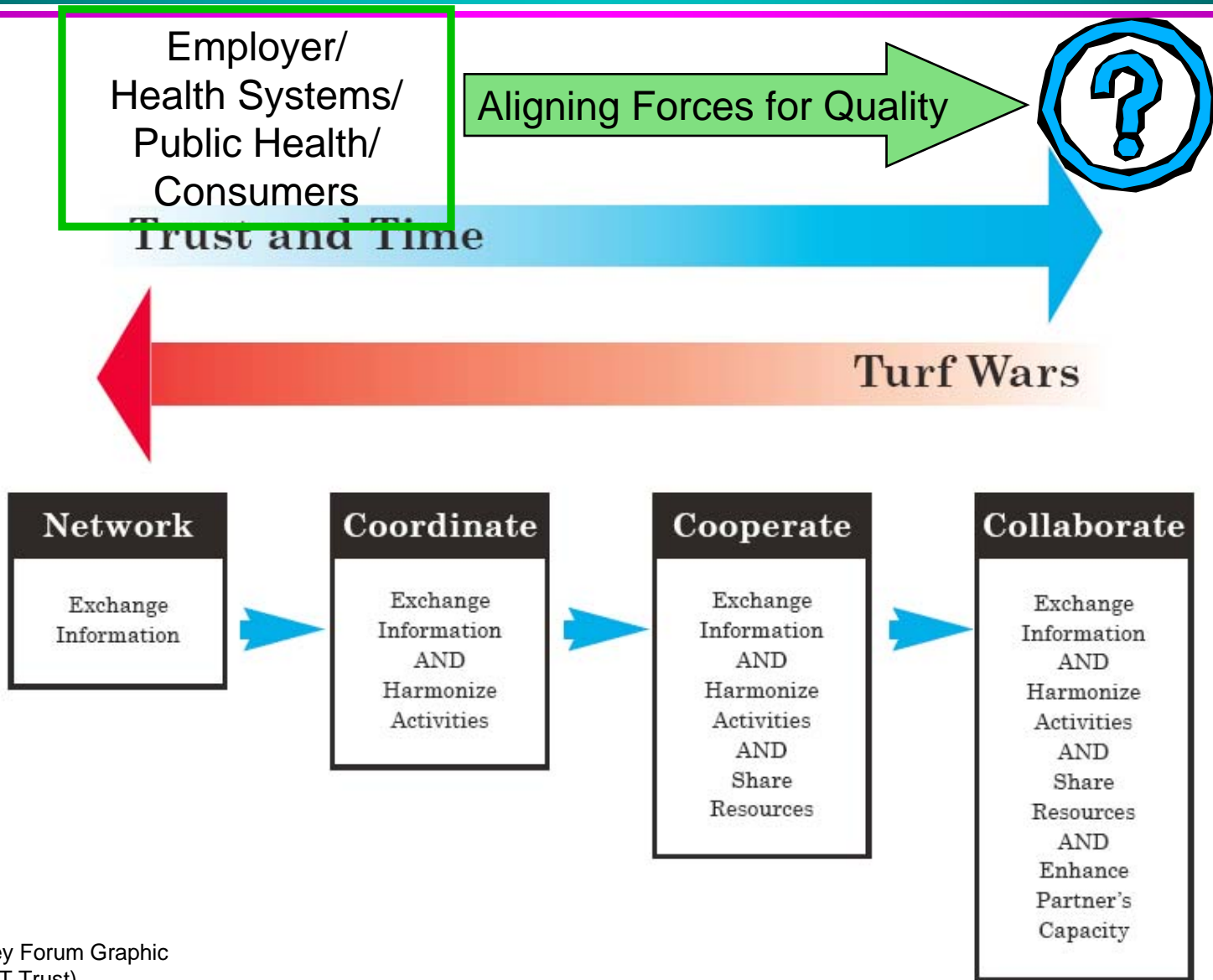
- 3+ Year Robert Wood Johnson Grant
- 15+ Communities in US

*Targeted Regions will Improve
and Sustain High-Quality
Patient-Centered Equitable
Care by 2015*

AF4Q - Primary Care System Values Alignment



Aligning Forces For Quality



Healthy Maine Partnerships

Set up

- 28 Local HMPs
- 8 Districts
- 42 Funded School H.C.

HMP Work

- Tobacco
- P.A.N.
- Chronic Disease

Local Healthy Maine Partnerships

Find your local Healthy Maine Partnership at www.healthymainepartnership.org

Aroostook District

- 1 Healthy Aroostook
- 2 Power of Prevention

Central District

- 3 Greater Somerset Health Collaborative
- 4 Greater Waterville PATCH
- 5 Healthy Communities of the Capital Area
- 21 Sebasticook Valley Healthy Communities Coalition (also Penquis District)

Cumberland District

- 6 Healthy Casco Bay/Healthy Portland
- 7 Communities Promoting Health

Downeast District

- 8 Bucksport Bay Healthy Communities Coalition
- 9 Healthy Acadia
- 10 Healthy Peninsula
- 11 St. Croix Healthy Communities
- 12 Union River Healthy Communities
- 13 Washington County One Community

Midcoast District

- 14 ACCESS Health
- 15 Healthy Lincoln County
- 16 Healthy Waldo County
- 17 Knox County Community Health Coalition

Penquis District

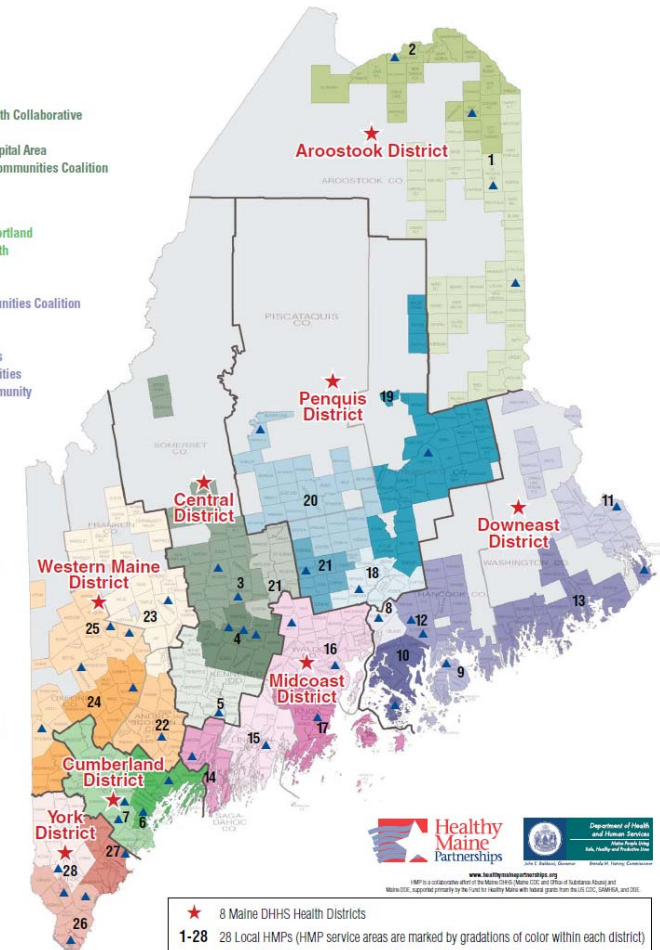
- 18 Bangor Region Public Health and Wellness
- 19 Partnership for a Healthy Northern Penobscot
- 20 Piscataquis Public Health Council
- 21 Sebasticook Valley Healthy Communities Coalition (also Central District)

Western Maine District

- 22 Healthy Androscoggin
- 23 Healthy Community Coalition
- 24 Healthy Oxford Hills
- 25 River Valley Healthy Communities Coalition

York District

- 26 Choose To Be Healthy
- 27 Coastal Healthy Communities Coalition
- 28 Partners for Healthier Communities

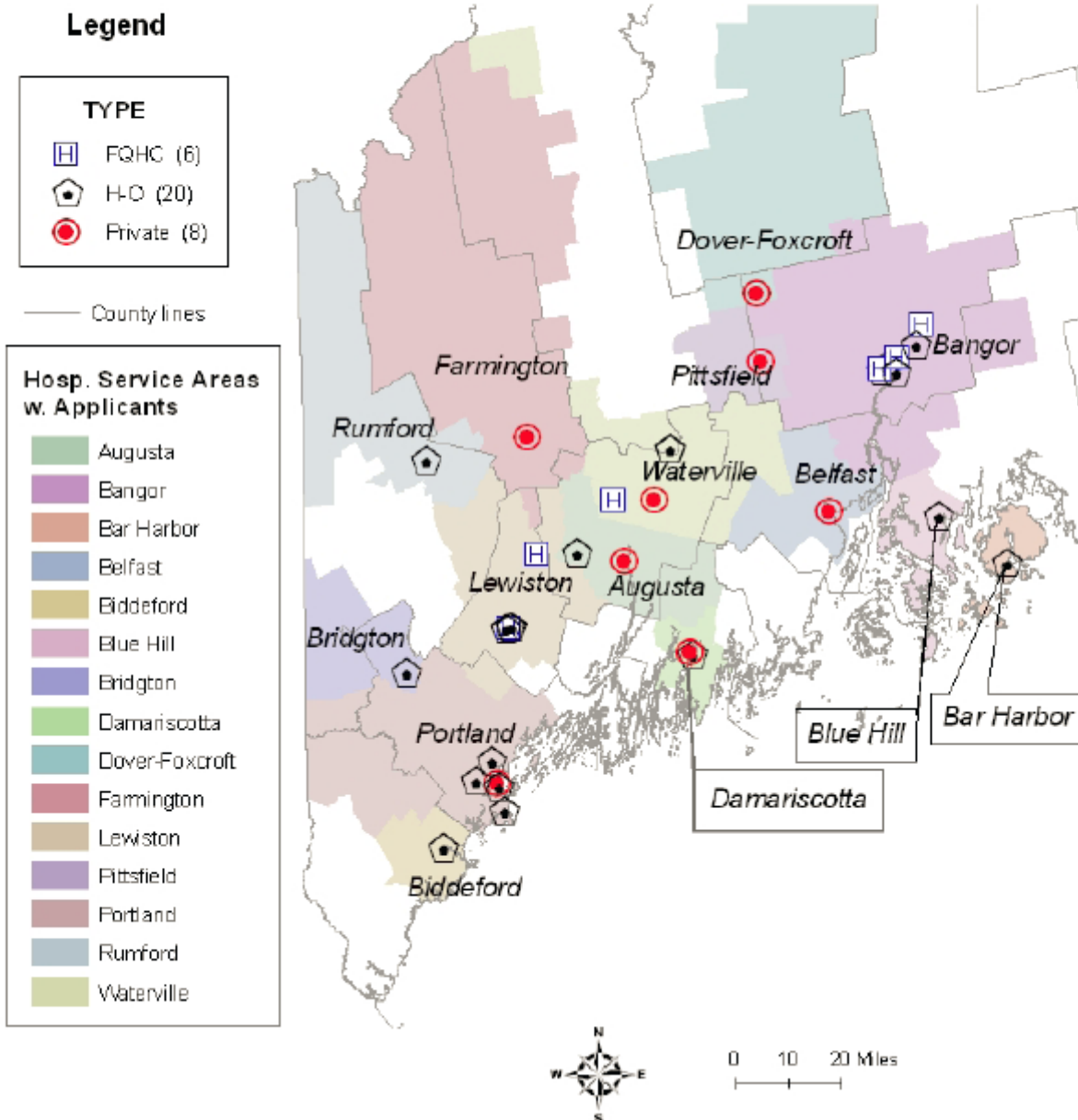


★ 8 Maine DHHS Health Districts
1-28 28 Local HMPs (HMP service areas are marked by gradations of color within each district)
▲ 42 School Administrative Districts with an HMP-funded School Health Coordinator

The gray areas on this map are unorganized territories, plantations, and townships with a population size of less than 50 people and/or a geographic size of more than 100 square miles with population density less than one person per square mile. These areas are not officially assigned to an HMP contract for outreach but people living in these areas who wish to get involved in HMP-related activities are encouraged to contact the HMP located closest to them. All gray areas are recognized as part of the public health district within which they are located.

Type of Practices

Maine PCMH Pilot Adult Applicants



National Priorities: Overarching Objectives

1. **Improve the health of the population**
2. Engage patients and families in managing health and making decisions about care
3. Improve the safety and reliability of America's health care system
4. Ensure patients receive well-coordinated care across all providers, settings, and levels of care
5. Guarantee appropriate and compassionate care for patients with life-limiting illnesses
6. Eliminate waste while ensuring the delivery of appropriate care

Population Health

Working Together for a Healthier America

The Partners are working to ensure that:

1. All Americans will receive the most effective preventive services recommended by the U.S. Preventive Services Task Force.
2. All Americans will adopt the most important healthy lifestyle behaviors known to promote health.
3. The health of American communities will be improved according to a national index of health.

Public Health & Health Care (Draft)

State/Pub Hlth		Employers/Plans
<ul style="list-style-type: none"> Community Pgms 	Delivery of Services	<ul style="list-style-type: none"> PCP practices ER Wellness Pgms
<ul style="list-style-type: none"> HMPs Public Hlth Districts Maine CDC 	Program Intermediaries	<ul style="list-style-type: none"> Employers PHOs Health Systems
Maine CDC/MQF <ul style="list-style-type: none"> Regulations State Health Plan 	Policy	MHMC/Employers <ul style="list-style-type: none"> HR Policies Purchasing Strat.

Collaboration

- Current Work
 - Care Model Inventory by HMPs
 - CDSMP through AAAs and PCP practices
 - Diabetes “Pathway” – AF4Q with Pub Hlth
 - Preventive Services “Pathway” with Pub Hlth
 - AF4Q-MHMC..... consumer communication
- Future Work
 - MaineCDC and AF4Q social media outreach
 - Connect MaineCDC & Employer wellness
 - Improve health of communities



Maine Doctor Ratings

Maine Hospital Ratings

Major Surgery Ratings

How Do I Get Quality Care?

Maine Doctor Ratings

Find out which Maine doctors do the best.



[View Results](#)

New, May 2009

Improving the way we rate Maine doctors »
Doctor Ratings Explained

How Do I Get Quality Care? Ask. Learn. Decide.



Interviews with Maine Doctors & Patients



Easy to Use Tip Sheets

Maine Hospital Ratings

Information you can use to choose a hospital.



[View Results](#)

Hospital Ratings Explained



MAINE CANCER PATIENT CHESLEY TALKS ABOUT HER EXPERIENCE. [MORE VIDEOS](#)



MAINE ASTHMA PATIENT RICK TALKS WITH HIS DOCTOR. [MORE VIDEOS](#)

Major Surgery Ratings

Facing a high-risk procedure? Which New England hospital is best?



[View Results](#)

Surgery Ratings Explained

HEAR FROM MAINE PEOPLE WHO SUPPORT RATING QUALITY

Dr. Barbara Crowley



Find a health care provider with whom you feel comfortable talking. Prepare yourself before seeing your health care provider by writing down your concerns and questions. At the visit, ask your questions until you understand, knowing that sometimes the most complete answer possible may take some time, additional tests, and visits with other professionals. The goal is for you and your health care team to have a similar understanding about what supports your health and to work together to achieve it.

What's New in Maine Healthcare

Maine Primary Care Practices

PTE Steering Committee Determines Pie and Blue Ribbon Cut Points.

Optional: Search within 10 miles of 04240

[View Results](#)

Maine Doctor Ratings

Primary Care Physicians

Sort by:

Highest Rated

Name

City

Miles

« **Doctor Ratings Explained**

page last updated May 2009

 [view Pediatric Practices >>](#)



Uses Clinical
Office Systems
ratings explained

Measures Results
of Diabetes Care
ratings explained

Measures Results
of Heart Disease
Care
ratings explained

Mechanic Falls Family Practice

22 Pleasant St, **Mechanic Falls** 04256 · [view map](#)

9.8 mi. from zip code 04240



Lisbon Family Practice

2 Bisbee Street, **Lisbon** 04250 · [view map](#)

5.1 mi. from zip code 04240



Central Maine Internal Medicine

12 High Street, Suite 400, **Lewiston** 04223 · [view map](#)

7.3 mi. from zip code 04240



Central Maine Family Practice

12 High Street, Suite 302, **Lewiston** 04240 · [view map](#)

located in zip code 04240



Family Health Care Associates PA - Auburn

190 Stetson Road, **Auburn** 04210 · [view map](#)

4.6 mi. from zip code 04240



Variation in HbA1c

PHO	Location	Total Diabetics	Pct of Diab. Mem with ≥ 1 HbA1C Test	Pct of Diab. Mem w/ Poor Control (>9%)
NA	Jonesport	137	100.0	10.2
NA	Bath	508	99.4	5.3
Yes	Corinth	395	98.2	7.0
Yes	Eagle Lake	127	95.3	7.4
Yes	Cape Elizabeth	352	95.2	5.7
Yes	Bangor	707	94.9	7.7
Yes	Biddeford	122	94.3	17.4
Yes	Farmington	270	93.0	6.8
Yes	Dover-Foxcroft	305	92.8	7.1
Yes	Rumford	357	92.7	6.3
Yes	Augusta	303	90.8	15.3
Yes	North Anson	170	90.0	7.8
Yes	Fort Kent	377	88.9	5.1
Yes	Brewer	222	84.7	13.3
NA	Van Buren	129	79.8	5.8
Yes	Scarborough	185	78.4	9.0
Yes	Poland	113	65.5	5.4
Yes	Scarborough	122	63.1	22.1
Yes	Calais	184	53.8	6.1
Yes	Lewiston	264	49.2	6.2

Degree of Difficulty for PCP Practices?

A practice with 500 patients with diabetes?

1. Installing a registry or EMR
2. Getting patients in 1-2 times a year for a HbA1c, LDL, and BP
10. Getting patients to:
 - Exercise
 - Eat better
 - Not smoke
 - Self - manage

Diabetes Pathway

Getting guideline adherent care:

- 8 step checklist for people with diabetes
- 7 step checklist for providers

SUCCESS With Diabetes

What to ask of your doctor.

What to do for yourself.



A participant in the Robert Wood Johnson Foundation's Aligning Forces for Quality initiative to improve health and health care in Maine.



Chronic Disease Self-Mgmt Pgms

Living Well Program Locations:

Organization ▲	Address	City ◆	St	Zip ◆	Phone
Aroostook Area Agency on Aging	33 Davis St.	Presque Isle	ME	04769	207-764-3396
Eastern Agency on Aging	450 Essex Street	Bangor	ME	04401	207-941-2865
Goodall Hospital	25 June Street	Sanford	ME	04073	207-490-7703
Healthy Acadia	80 Mount Desert Street	Bar Harbor	ME	04609	207-288-5331
Houlton Regional Hospital	20 Hartford Street	Houlton	ME	04730	207-532-9471
Inland Hospital	200 Kennedy Memorial Dr.	Waterville	ME	04901	207-861-3292
Islands Community Medical Center	15 Medical Center Loop	Vinalhaven	ME	04863	207-863-4341
Maine General Health	6 East Chestnut Street	Augusta	ME	04330	207-624-3814
Maine Primary Care Association	73 Winthrop St.	Augusta	ME	04330	207-621-0677 ext.222
MaineHealth Learning Resource Center at Stephens Memorial Hospital	193 Maine Street	Norway	ME	04268	207-743-1562 Ext. 289
Parkview Adventist Medical Center	329 Maine Street	Brunswick	ME	04011	207-373-2162
Somerset Heart Health	46 Fairview Ave.	Skowhegan	ME	04976	207-474-7473
Southern Maine Agency on Aging	136 U.S. Route 1	Scarborough	ME	04074	1-800-427-7411
Spectrum Generations	One Weston Court	Augusta	ME	04330	1-800-282-0764
Spectrum Generations Coastal Community Center	521 Main St.	Damariscotta	ME	04553	207-563-1363
St. Andrews Village	145 Emery Ln	Boothbay Harbor	ME	04538	207-633-0920
The Memorial Hospital	3073 White Mountain Highway	North Conway	NH	03860	603-356-5461 ext. 417
Waldo County Healthcare	118 Northport Ave.	Belfast	ME	04915	207-930-6745

Healthy Lifestyles

Keep ME Well

- Online Health Risk Appraisal for anyone in communities (including uninsured)
- Connects to appropriate resources
- Print out to share with provider

? Common Print Out with Employer HRAs

? Connection to Chronic Disease Self Management work

Prevention Pathway

SUCCESS

with your health

what to ask of your doctor

what to do for yourself

for good health



A participant in the Robert Wood Johnson Foundation's *Aligning Forces for Quality* initiative to improve health and health care in Maine.

Chronic Disease Partners of Maine



Responsibilities / Accountabilities??

■ Preventive Services

- PCP Practices
- Employers
- Health Plans
- Public Health

■ Healthy Lifestyles

- Employers
- Wellness Councils
- Public Health
- Health Plans
- Consumer Groups
- ??

■ Social Determinants

- Public Health
- Health systems
- Physician Practices
- Employer / Chambers of Commerce
- United Ways
- Social Service Agencies
- Consumer Groups
- Etc. Etc. Etc.